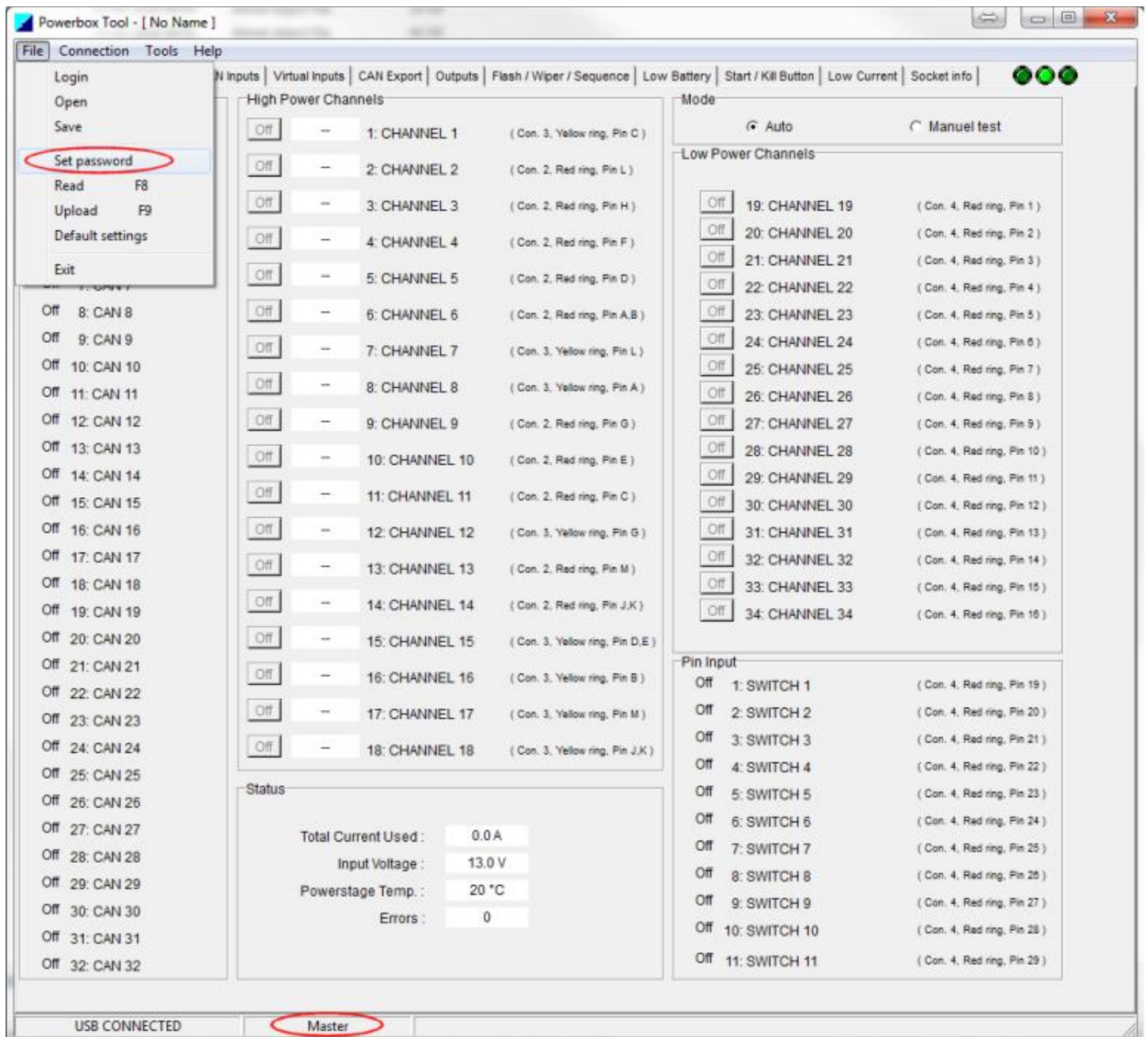
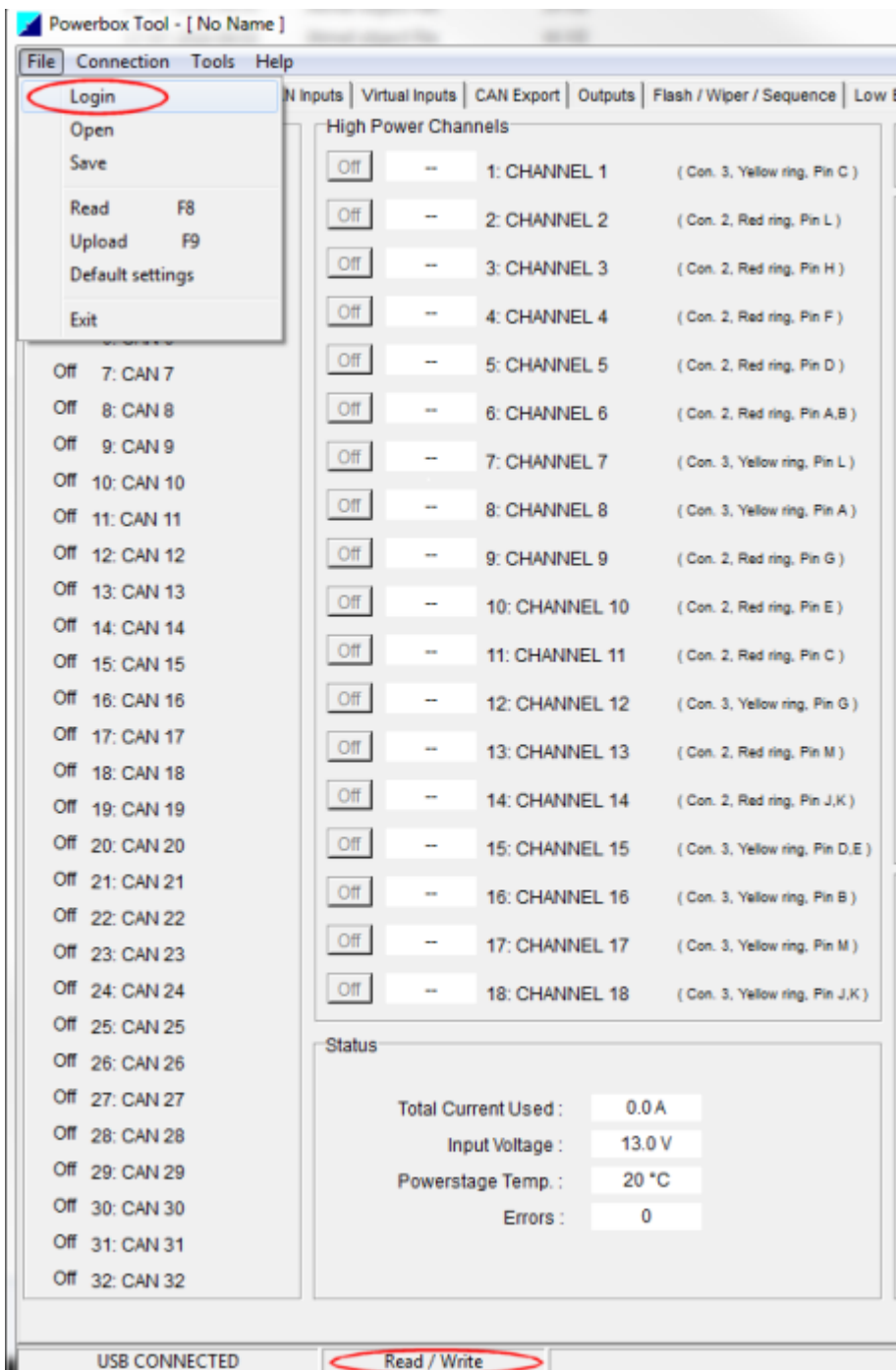
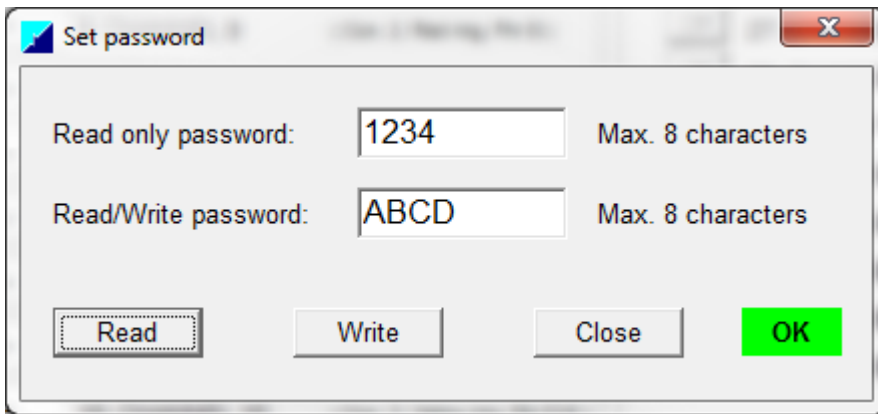


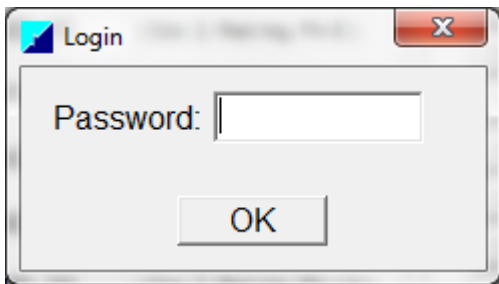
New features:

It's now possible to set 3 different login level's

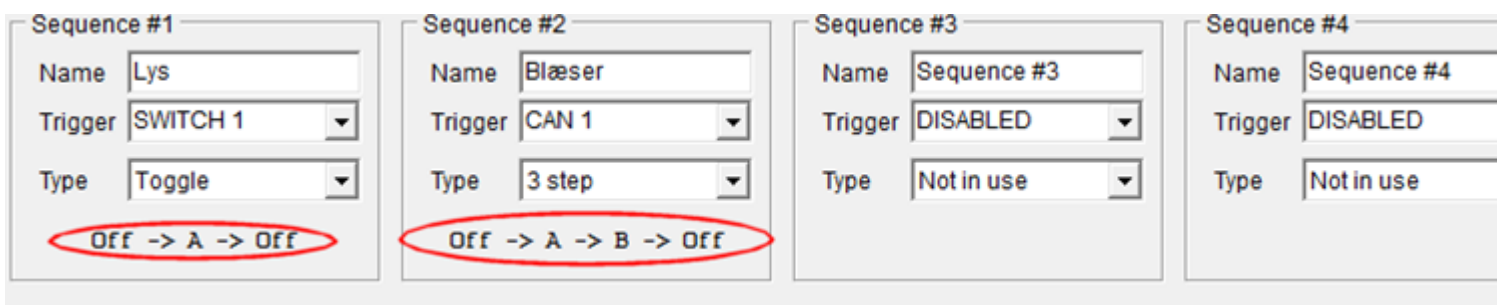
1. Its possible to save 2 different passwords in the HP8440/HP8441
 - Read only
 - Read/Write
2. On the command line write **MasterLogin** after the .exe. It will give you full access to the login menu so its able to set the passwords.
 - That means "Set password" menu/button is visible.
3. Login level is shown on the bottom of the screen.
4. 'Normal' users are typing in their access code in the "Login" in File menu.
 - When HP84xx is connected via USB the software is checking the security level
- User password is saved on the PC (only type it once)
5. If there is empty passwords in the HP84xx, its full access







Toggle menu and 3 – 4 step toggle is made via CAN:



Sequence text is shown on the menu left.

| Input Pin Conn. | Input Trigger | Trig By | Delay [s] |
|---------------------|---------------|---------|-----------|
| (Lys.A) | Sequence 1.A | OPEN | 0.0 |
| (Blæser.A) | Sequence 2.A | OPEN | 0.0 |
| (Blæser.B) | Sequence 2.B | OPEN | 0.0 |
| (Virtual input 1) | VIRTUAL 1 | - | 0.0 |
| (Virtual input 1) | VIRTUAL 1 | - | 0.0 |

Latching name changed to Toggle:

