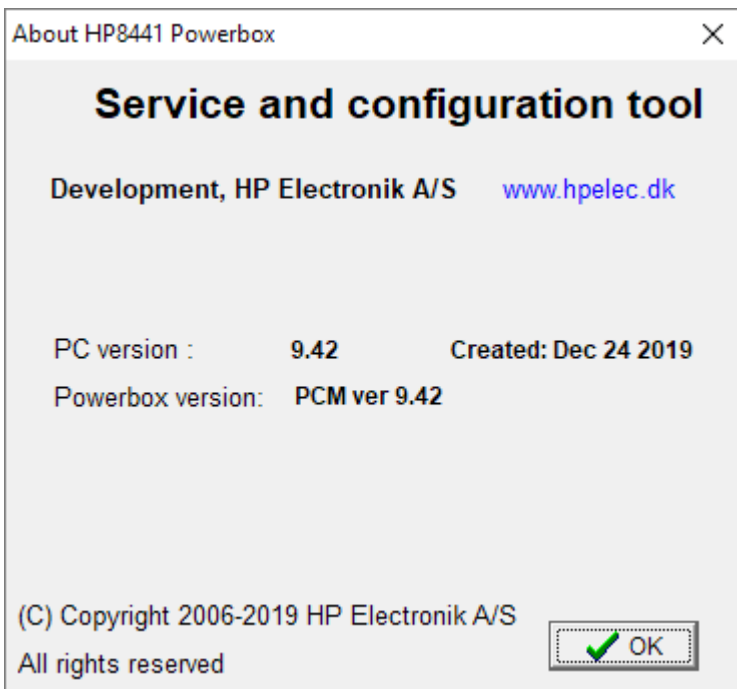


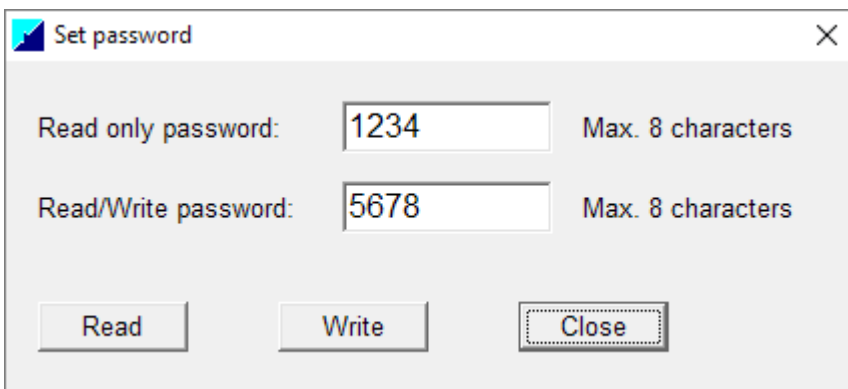
HOW TO SET AND USE PASSWORD MENU

In Version 9.42 we have implemented a password function to Hide the setting - that gives the user restricted access to the menus, depending of the passwords they can have "view only" or "full access".

To set the password connect to the powerbox go to the "about Menu"



Type "hp8440" and you will get a popup of the password menu



Now set the passwords for Read only (small Menu)

And for Read Write = Full Access

Empty Passwords = no restrictions

Some examples:

If an empty password is set in the Read Only box – That will cause the PC software to show the small menu only, without login in.

If a password exist in the read only box, the user have to login to see the small menu.

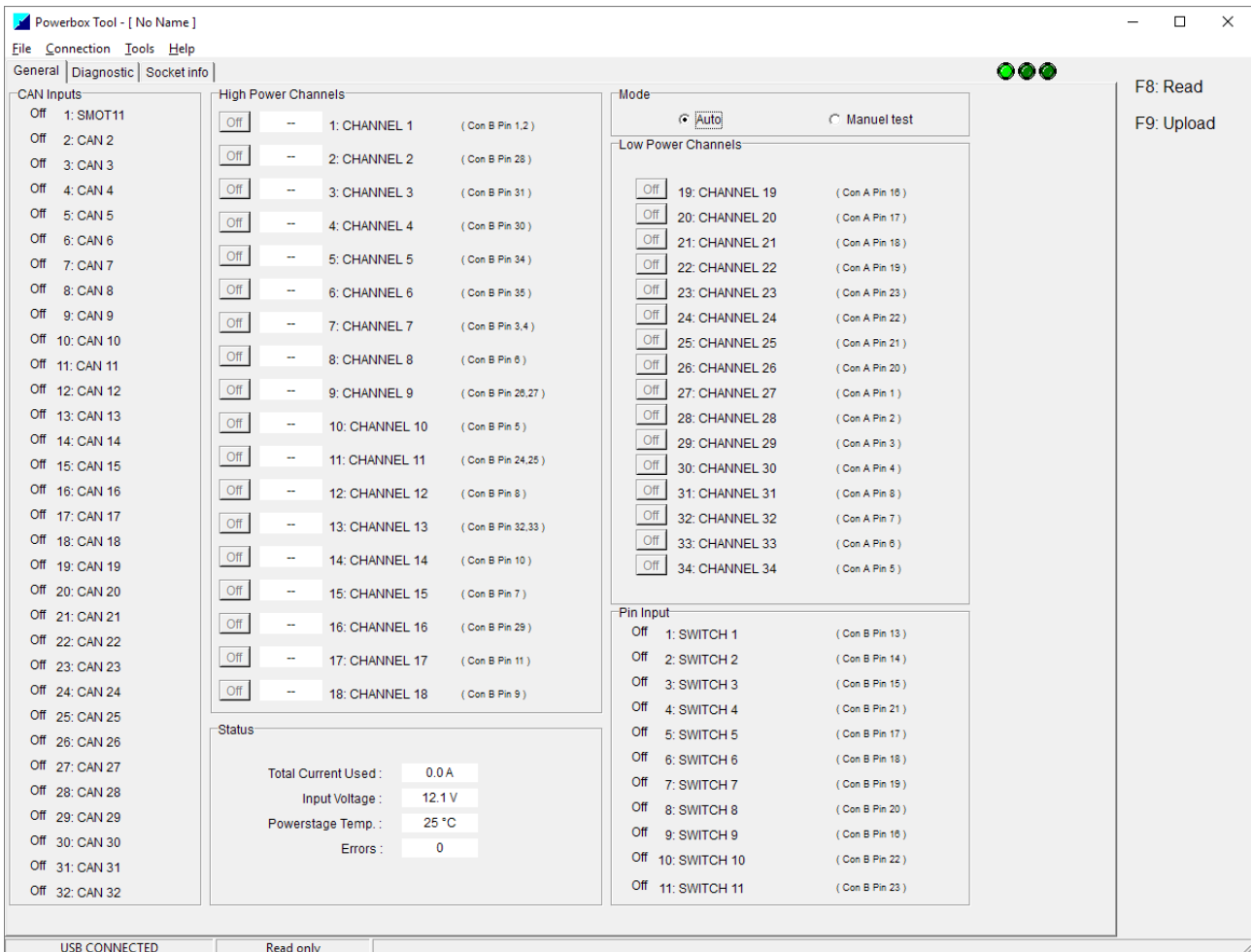
If the user logs in using the Read/write Password the will have full access to the software

When the passwords has been set.

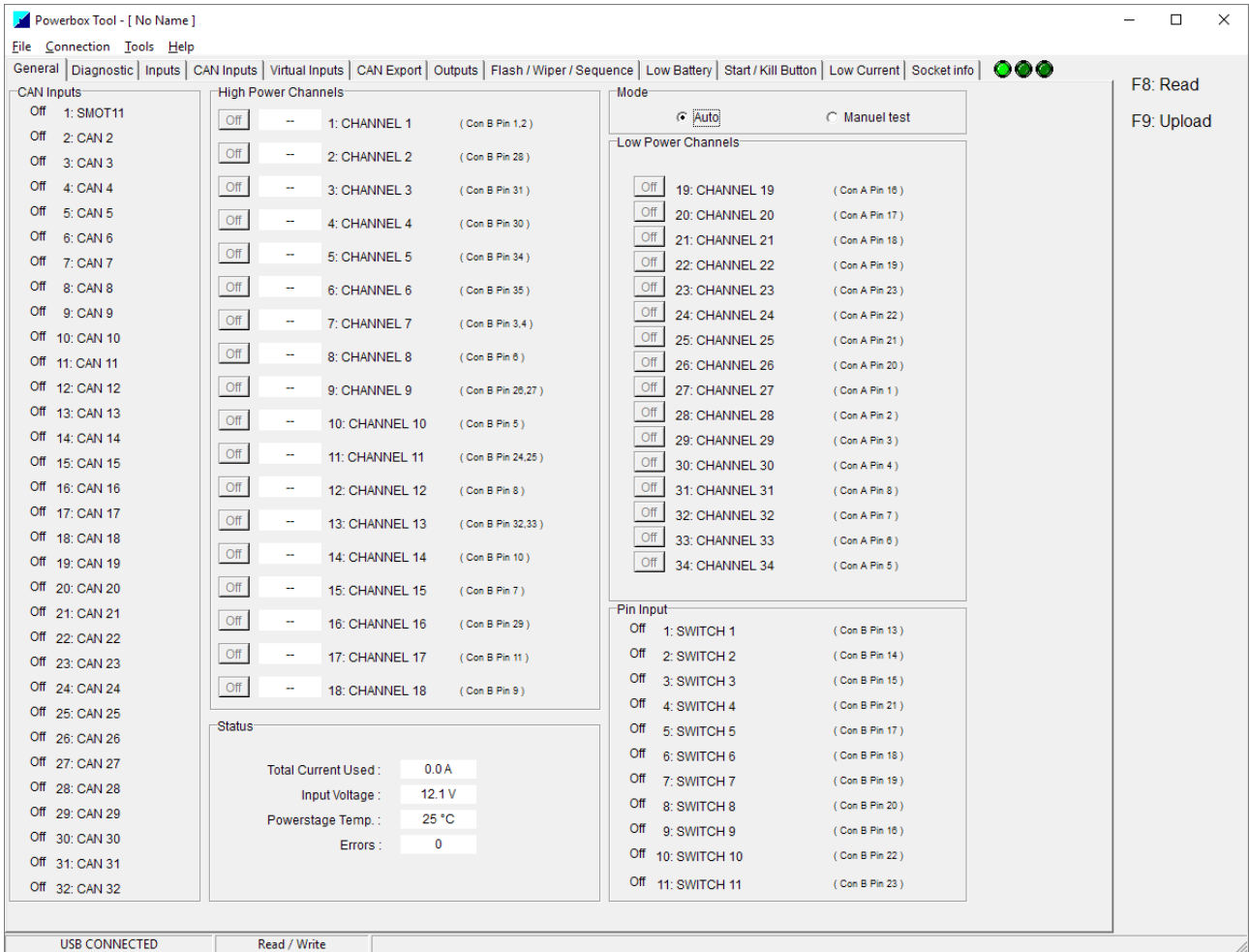
Press “write” to upload the setting into the powerbox.

The small menu is a reduced menu, where its only possible to see the General and Diagnostic menu

Also it is possible to go to the Manual test mode for activating the outputs and monitor the inputs.



The Read/Write password gives access to the full menu where it is possible to view and change the setting.



To login to the Powerbox, type the password in the “file” – “Login” window

Then make the USB Connection.

The PC remembers the last used password. – If you need to clear this – just type in a wrong password and The saved password in the PC will then be overwritten.

VERY IMPORTANT:

In case of a lost password, call or mail support and start a team wiever, we can unlock the box from remote site.